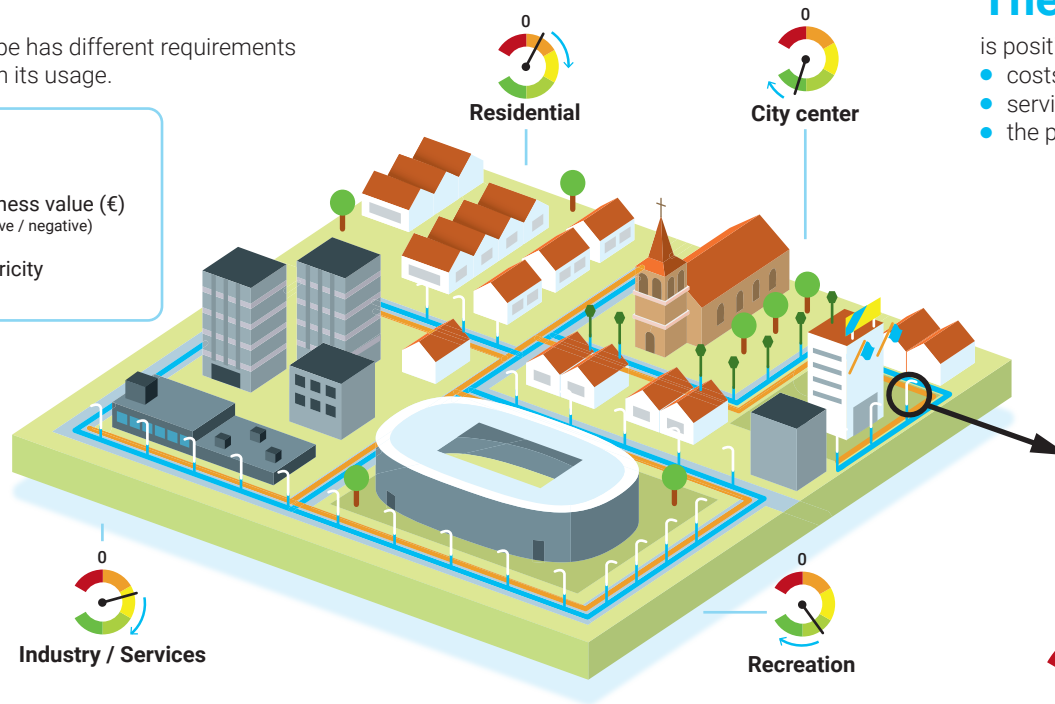
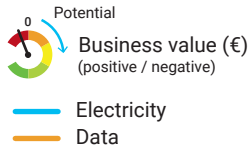


Smart Public Nodes Proving the Smart City Business Case

Zones

Each area type has different requirements depending on its usage.

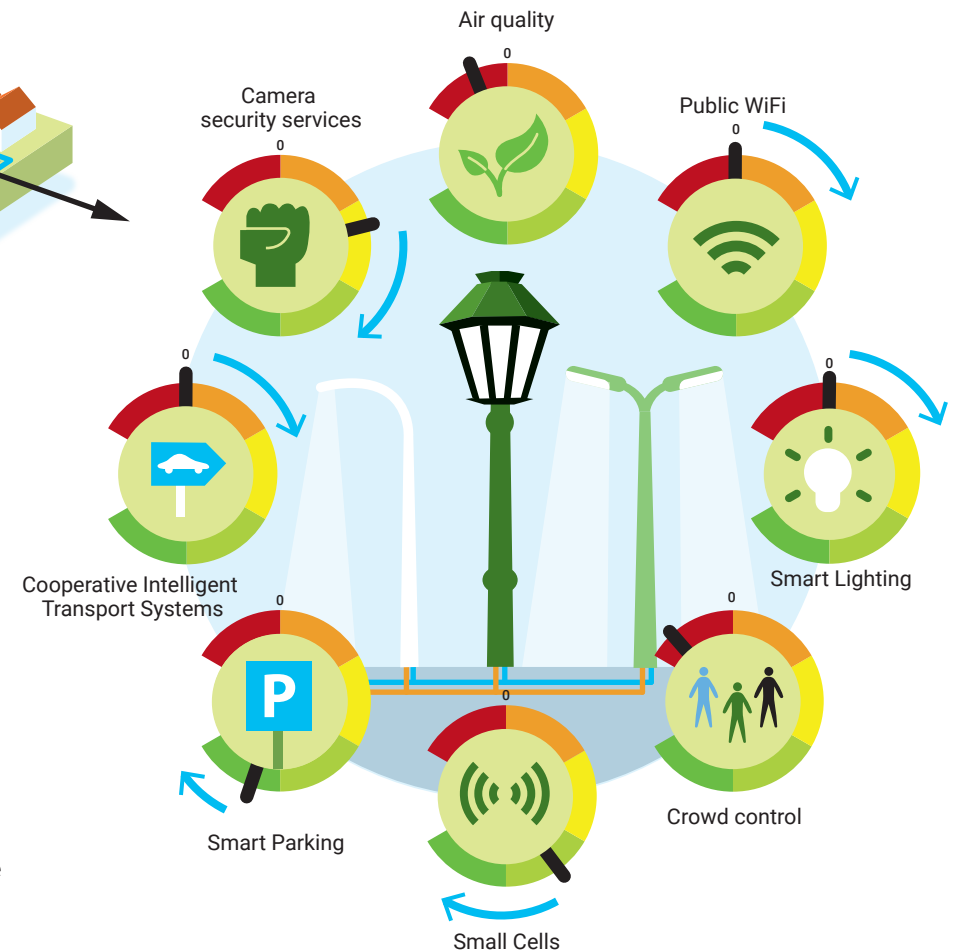
Legend



The business case for Smart Public Nodes

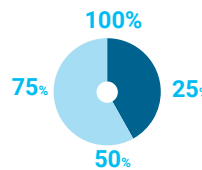
is positive over the lifetime of the infrastructure, if:

- costs are shared amongst a set of services
- services are offered where demanded
- the public and private sector cooperate closely



PPP

The chosen distribution of public-private partnership.



The ideal Mixture

Based on local requirements and zonal structures, communities can compose the ideal mix of functionalities. Depending on the chosen mix, the return will be higher/lower.

